

# iQProg

“iQ” instant machine configurator

## TABLE OF CONTENTS

<b>1 CONFIGURING PARAMETERS.....</b>	<b>3</b>
<b>2 CREATING A NEW CONFIGURATION.....</b>	<b>3</b>
<b>3 SETTING PARAMETERS IN A MACHINE MENU.....</b>	<b>4</b>
<b>4 ADJUSTING RECIPE DOSES.....</b>	<b>5</b>
4.1 Smart panel	6
4.1.1 Copying doses	6
4.1.2 Cloning doses from more soluble drinks	7
4.1.3 Cloning all doses from the 6 soluble drinks	7
4.1.4 Renaming drinks and/or recipes	7
4.2 Saving modified data	7
<b>5 SAVING A CONFIGURATION.....</b>	<b>8</b>
<b>6 OPENING AN EXISTING CONFIGURATION.....</b>	<b>8</b>
<b>7 COMPILING AND SAVING A FILE EVA-DTS.....</b>	<b>8</b>
<b>8 LANGUAGE.....</b>	<b>9</b>
<b>9 SETUP.....</b>	<b>9</b>

# iQProg

*iQProg* is a PC application permitting users to create, save, load and modify configuration parameters in VMC *Prosyd iQ* Instant (a text file is created and compiled in the standard format EVA-DTS 6.0).

## 1 Configuring parameters

---

By the term “configuring” we mean all the settings a technician/operator can manually make on the Vending Machine.

The new application *iQProg* makes configuring much easier, thanks to its user-friendly interface enabling users to set most configuration parameters<sup>1</sup> and compile data in a text file (format EVA-DTS 6.0).

Later, data can be remote downloaded on the VMC main-board following one of the communication protocols supported by the firmware (DEX-UCS).

## 2 Creating a new configuration

---

Select “New configuration” in the File menu (or press buttons CTRL N) to create a new configuration.

Enter Configuration name. The name has no extension and should not contain either special or control characters; alphanumeric characters are accepted (both in capital or small letters), as well as the signs hyphen (-) and underscore (\_).

When a configuration has been incongruously named, it is automatically re-named.

---

<sup>1</sup> Data/Hour cannot be modified, since they are not important to the function of *iQProg*.

### 3 Setting parameters in a machine menu

The left panel contains a menu tree containing all programming parameters, which are grouped as follows:

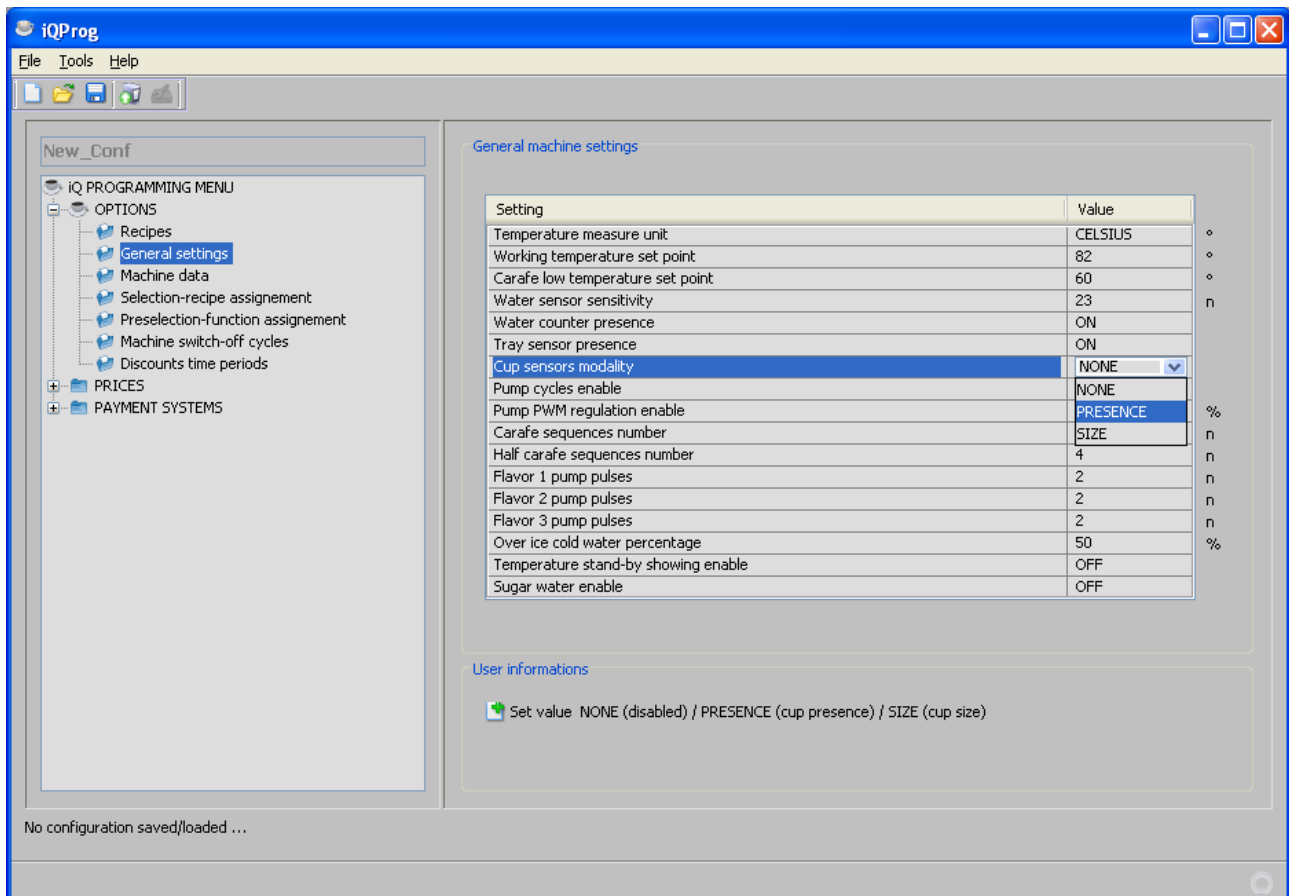
- OPTIONS
- PRICES
- PAYMENT SYSTEMS

Click on the names to expand the menus and display submenus. Click on a submenu item and the corresponding table will be displayed, containing all the parameters set for the selected option.

You can click on OPTIONS, for instance, and next on submenu “General settings”: a list will be displayed containing the General machine settings, such as the temperature set point or the cup sensor modality.

If you want to modify a value, double-click on the right cell of the parameter whose value you want to modify and set the new value (instructions are given below in the “user information” area).

If you want to modify values rapidly, press ENTER after a parameter has been modified: the cursor will automatically shift to the next cell. Click on BACKSPACE to cancel an old setting and set a new value.



When incongruous values have been set, they will be automatically restored to their default values.

When a congruous value has been set but its value is higher/lower than the max./min. value allowed, the parameter value is automatically adjusted to the max./min. value.

When a comma is used as decimal point, the character is automatically modified into a point (no matter the language used).

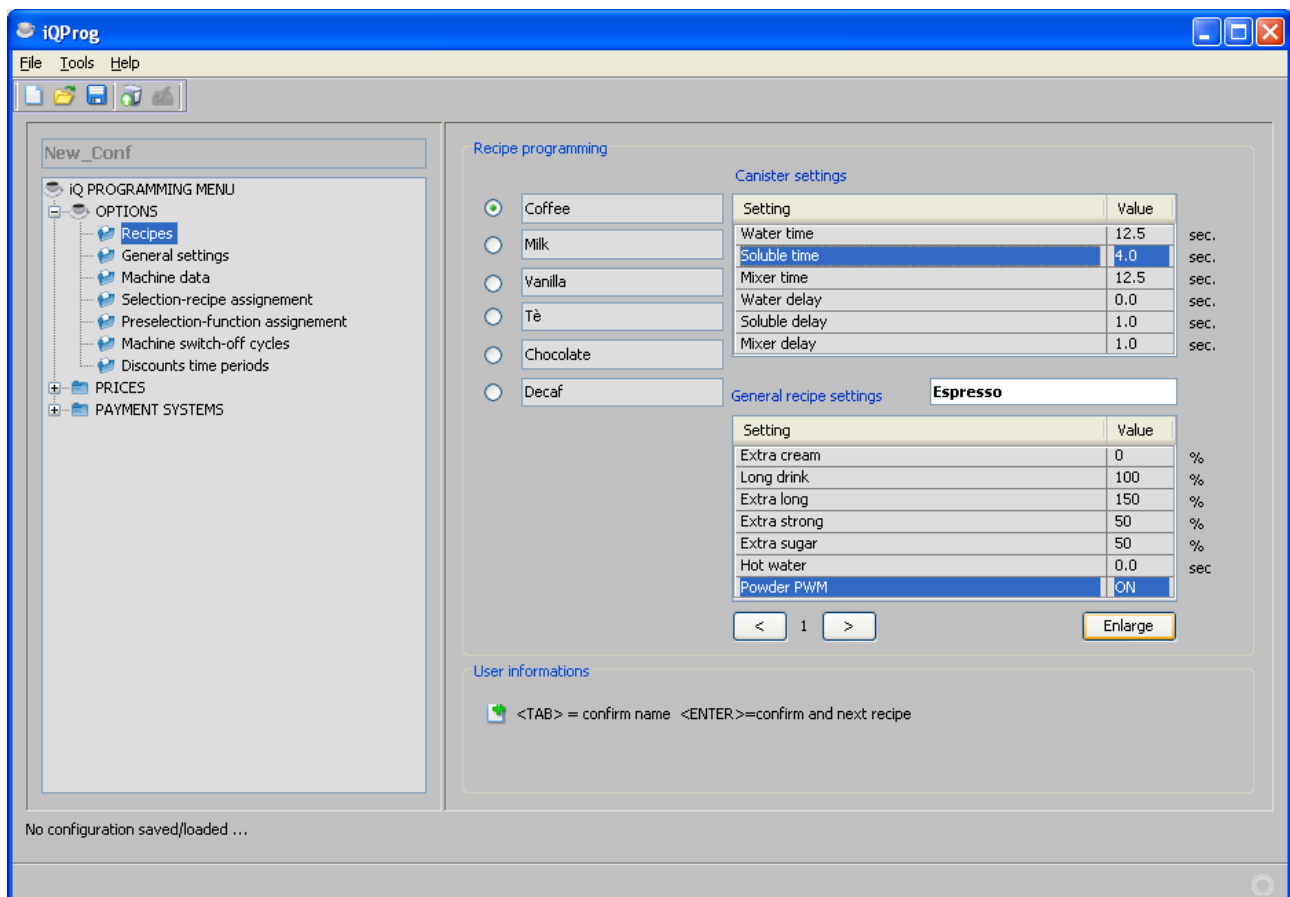
## 4 Adjusting recipe doses

Adjusting recipe doses is definitely more difficult to operators, since times and doses for the 6 soluble drinks must be adjusted for each of the 12 recipes available.

Select "OPTIONS" and the submenu "Recipes".

The recipe setting table will be displayed for each recipe (when available):

- enter a name (alphanumeric characters) for each of the 6 soluble drinks;
- enter a name (alphanumeric characters) for each of the 12 recipes;
  
- adjust the following parameters for each of the 6 soluble drinks:
  1. water
  2. soluble
  3. mixer
  4. water delay (not relevant)
  5. soluble delay
  6. mixer delay



## 4.1 Smart panel

Click on “Enlarge” on the recipe programming area: the SMART PANEL is displayed, where doses can be quickly adjusted.

The screenshot shows a software window titled "Quick recipe data configuration panel". It is divided into several sections:

- Canister settings:** A table with columns for Coffee, Milk, Vanilla, Tè, Chocolate ..., and Decaf. Rows include Water time, Soluble time, Mixer time, Water delay, Soluble delay, and Mixer delay. The "Water time" for Coffee is highlighted with a value of 12.5.
- Recipe panel:** A grid of buttons for selecting recipes, including Espresso and Cappuccino, and numbered buttons from 3 to 12.
- Recipe programming:** A section for editing the "Espresso" recipe, showing a table of settings and values (e.g., Extra cream: 0%, Long drink: 100%, Extra long: 150%, Extra strong: 50%, Extra sugar: 50%, Hot water: 0.0 sec., Powder PWM: ON).
- User informations:** A section at the bottom with a keyboard icon and text: "<TAB> = confirm name <ENTER>=confirm and next recipe".

An "Exit" button is located at the bottom right of the panel.

### 4.1.1 Copying doses

Doses can be copied from a soluble drink to another within the same recipe or from different recipes.

Position the cursor on the title of the column containing the soluble drink you want to copy and click on the right button of the mouse: a popup menu will be opened. Click on “Copy doses”.

Click the right button of the mouse on the title of the column where you want to copy the soluble drink and select “Paste doses”.

The same operation can be made by clicking on the buttons in the menu bar at the top of the panel. In that case, you can select any cell of the reference soluble drink.

### 4.1.2 Cloning doses from more soluble drinks

One or more doses can be cloned from one or more soluble drinks, from a recipe to another.

When cloning soluble drinks, the very same doses are automatically copied from the original recipe to the destination recipe. When “freezing” “soluble delay” doses in soluble drinks 1, 2 and 3 belonging to recipe number 01, the same doses can be later cloned in the same soluble drinks belonging to different recipes.

This operation is useful for similar recipes, since doses can be cloned quickly.

Select the dose you want to clone on other recipes (press CTRL to select more doses). Click the right button on one of the selected cells and click on “Freeze selected doses”. The recipe is displayed where you wish to clone doses. Click the right button on any cell in the table containing soluble drinks and click on “Clone freezed doses”.

The same operation can be made by clicking on the buttons in the menu bar at the top of the panel.

### 4.1.3 Cloning all doses from the 6 soluble drinks

All doses can be cloned from all soluble drinks, from a recipe to another.

Two different procedures are equally possible:

- 1) Select all the doses in the 6 soluble drinks, then freeze doses as described above.
- 2) Click the right button on the first column (the column contains dose names): all doses are automatically selected. Then freeze doses as described above.

### 4.1.4 Renaming drinks and/or recipes

If you wish to rename drinks, click the right button on the title of the column containing soluble drinks. Enter a new name in the text box within the popup menu.

If you wish to rename recipes, select a recipe and enter a new name in the text box. After you have pressed ENTER you can rename the next recipe (recipes can be rapidly renamed).

## 4.2 Saving modified data

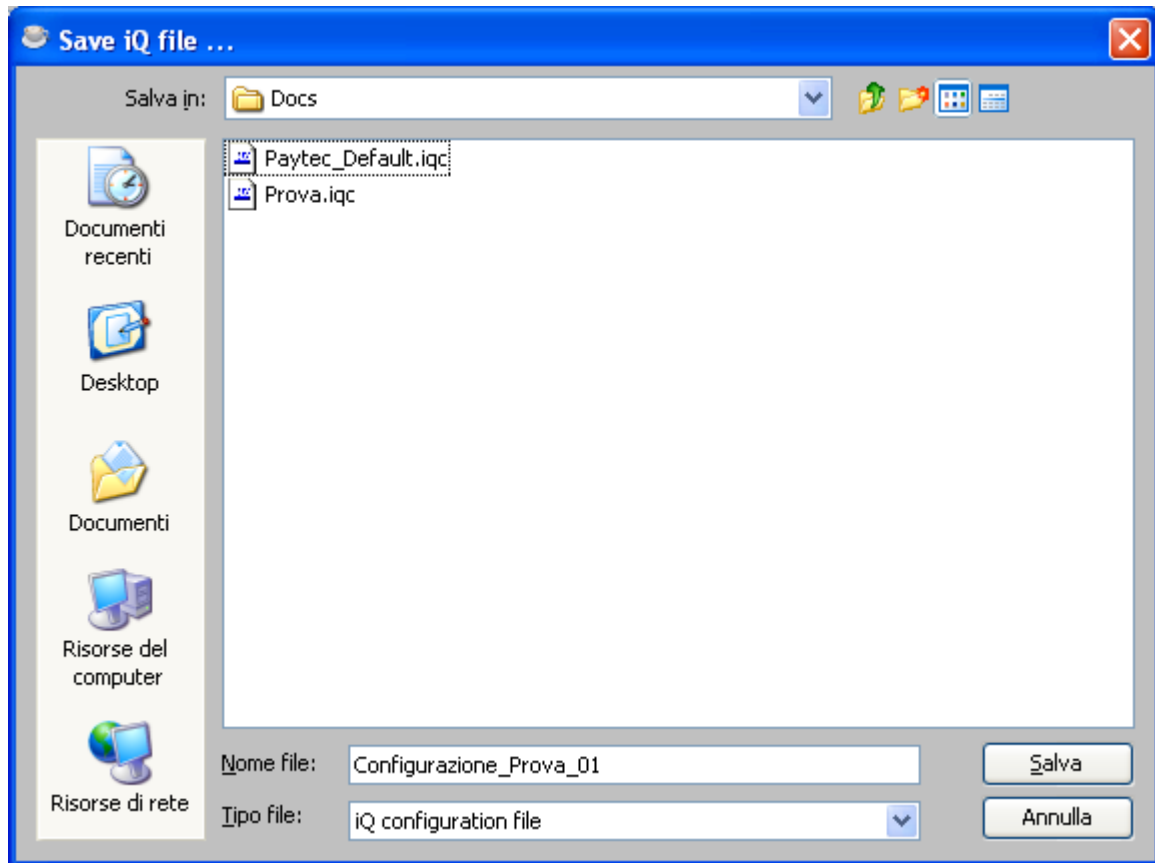
Save data before you exit the SMART PANEL (if you don't, all the modified settings will be lost).

## 5 Saving a configuration

---

Configurations can be saved as property files *.IQC*

If you want to save a configuration, either click on file menu and select “Save as ...”, or press CTRL A. Select a destination folder, enter the name (omit the extension) and finally click on SAVE.



## 6 Opening an existing configuration

---

Click on File menu, then select “Load configuration” or press CTRL C.

Select the source folder, then select a file IQC and click on OPEN.

## 7 Compiling and saving a file EVA-DTS

---

*iQProg* enables users to create a text file (.TXT) (format EVA-DTS 6.0) containing the machine entire configuration; the file can be remote downloaded on the VMC main-board.

Click on “TOOLS”, then select “Compile file EVA-DTS” or press CTRL T.

Select destination folder and the file .txt (without extension).



## 8 Language

---

iQProg can be configured in the following languages:

- Italian
- English
- Spanish

If you wish to modify the current language, first click on “TOOLS” and then on “Language” (select the language you prefer).

The language can be modified when the current configuration has not been modified. When a setting has been modified, the option “language” is inhibited.

-

## 9 Setup

---

The application has been developed with Java technology, it is therefore necessary to install Java Run Time 6.0 or later (<http://java.sun.com/javase/downloads/index.jsp>).

["iQProg" doesn't need a setup tool: just load the file "iQProg.zip." on your PC and in the selected folder. Once all files have been unzipped, click on iQProg.jar.](#)